

<b>Description</b>	<b>Page</b>
Product index	1-2
Systems solutions	1-5
Electro-hydraulic axes	1-7
Machine directive – position papers	1-10

1

Product Series	Description	Page
2F1C	2 Way Variable Flow Control Valve	5-15
A	Subplate	12-8
A10	Adaptor Plate	12-37
A102	Subplate	12-12
C / 9C	Check Valve	10-45
C*A	2 Way Slip-In Cartridge Valves, Cover w/o Auxiliary Functions	8-9
C*B	2 Way Slip-In Cartridge Valves, Cover with Stroke Limiter	8-10
C*C	2 Way Slip-In Cartridge Valves, Cover f. Pilot System Mounting	8-12
C*F	2 Way Slip-In Cartridge Valves, Cover with Pressure Valve	8-15
C*G	2 Way Slip-In Cartridge Valves, Cover with Pressure Valve	8-16
C*V	2 Way Slip-In Cartridge Valves, Cover with Shuttle Valve	8-17
C*W	2 Way Slip-In Cartridge Valves, Cover with Shuttle Valve	8-18
C10 D*C	2 Way Slip-In Cartridge Valves	8-113
C18 D*C	2 Way Slip-In Cartridge Valves	8-121
C1DB	2 Way Cartridge Valve	8-101
C4V	Check Valve	6-15
C4V	Hydraulically Pilot Operated Check Valve	6-21
C5P	Pilot Operated Check Valve	9-67
C5V	Direct Operated Check Valve	9-63
CB	Cartridge Manifold Block	12-33
CE, CP, C	2 Way Slip-In Cartridge Valves	8-5
CM	Direct Operated Check Valve	7-59
Compax3F	Servo Drive	11-23
CP / 9CP	Pilot Operated Check Valve	10-47
CPOM	Pilot Operated Check Valve	7-69
CPS	Pilot Operated Check Valve	6-19
CS	Check Valve	6-9
CS	Sandwich Plate	12-29
D*1FB	Pilot Operated Proportional DC Valve, with/without OBE	3-37
D*1FE	Pilot Operated Proportional DC Valve	3-71
D*1FH	Pilot Operated Proportional DC Valve	3-63
D*1FP	Pilot Operated Servo Proportional DC Valve	3-99
D*1VW	Pilot Operated Directional Control Valves	2-61
D*1VWR/Z	Regenerative and Hybrid Valves	2-75
D11P	Direct Operated Directional Control Valves	2-83
D1FB	Direct Operated Proportional DC Valve, with CANopen	3-25
D1FB	Direct Operated Proportional DC Valve, with/without OBE	3-3
D1FP	Direct Operated Proportional DC Valve	3-81
D1FV	Proportional Pressure Reducing Valve, with/without OBE	3-53
D1MW	Directional Control Valve	2-35

Product Series	Description	Page
D1SE	3/2 Way Seated Type Directional Control Valve	2-3
D1VA	Direct Operated Directional Control Valve	2-95
D1VL	Directional Control Valves	2-99
D1VP	Direct Operated Directional Control Valves	2-83
D1VW	Directional Control Valve	2-7
D1VW	Directional Control Valve, Inductive Position Control	2-21
D1VW	Directional Control Valve, Explosion Proof	2-29
D1VW	8 Watt, Directional Control Valve	2-15
D30FP	Pilot Operated Proportional DC Valve	3-93
D31DW	Pilot Operated Directional Control Valves	2-61
D31NW	Pilot Operated Directional Control Valves	2-61
D31NWR	Regenerative and Hybrid Valves	2-75
D3DL	Directional Control Valves	2-99
D3DP	Direct Operated Directional Control Valves	2-83
D3FB	Direct Operated Proportional DC Valve, with/without OBE	3-15
D3FB	Direct Operated Proportional DC Valve, with CANopen	3-25
D3FP	Direct Operated Proportional DC Valve	3-87
D3MW	Directional Control Valve	2-55
D3W	Directional Control Valve	2-41
D3W	Directional Control Valve, Inductive Position Control	2-49
D4L	Directional Control Valves	2-99
D4P	Direct Operated Directional Control Valves	2-83
D4S	Directional Seat Valve, Subplate Mounting	6-25
D4S	Directional Seat Valve, Pipe Mounting	10-27
D51*	Cover Plate	12-31
D5S	Directional Seat Valve	9-35
D9L	Directional Control Valves	2-99
D9P	Direct Operated Directional Control Valves	2-83
DSBA	Pilot Valve With Preload Function	8-23
DUR*L06	2 Way Proportional Flow Control Valve	5-21
EVSA	Direct Operated Pressure Relief Valve	4-19
EX-M05	Test Unit	11-43
EX-N08	Power Supply	11-41
F / 9F	Throttle Check Valve	10-41
F5C	Proportional Throttle Valve	9-49
FM	Throttle Check Valve	7-47
FS	Throttle Check Valve	5-7
GFG2	2 Way Flow Control Valve	5-11
H06	Sandwich Plate	12-25
H10	Sandwich Plate	12-39
LCM	Pressure Compensator	7-39
MSP	Multi-Station Manifold	12-13
MV / 9MV	Needle Valve	10-37
MVI	Cartridge-Type Needle Valve	5-3
N / 9N	Needle Valve	10-39

Product Series	Description	Page
NS	Needle Valve	5-5
PADA	Adaptor Plate	12-23
PC*MS	Flow Control Valve	5-9
PCD00A-400	E-Module for Prop. Pressure/Flow Control Valves	11-11
PCM / 9PCM	Flow Control Valve	10-43
PID00A-40*	E-Module for Closed Loop Control	11-19
PRDM	Direct Operated Pressure Reducing Valve	7-17
PRM	Pilot Operated Pressure Reducing Valve	7-23
PRPM	Pilot Operated Prop. Pressure Reducing Valve	7-35
PSB	Pressure Switch	12-45
PWD00A-400	E-Module for Proportional Valves	11-3
PWDXXA-40*	E-Module for Proportional Valves	11-7
PZD00A-40*	E-Module for Command Signal Processing	11-15
R / RS*E	Pilot Operated Pressure Relief Valves, Slip-In Cartridge	8-33
R06M	Pilot Valve With Pressure Relief Function	8-20
R1E02	Direct Operated Pressure Relief Valve	4-23
R4R	Pilot Operated Pressure Reducing Valve, Subplate Mounting	4-95
R4R	Pilot Operated Pressure Reducing Valve, Pipe Mounting	10-9
R4R*P2	Pilot Operated Proportional Pressure Reducing Valve, Subplate Mounting	4-107
R4R*P2	Pilot Operated Proportional Pressure Reducing Valve, Pipe Mounting	10-21
R4S	Pilot Operated Sequence Valve, Subplate Mounting	4-85
R4U	Unloading Valve, Subplate Mounting	4-77
R4V	Pilot Operated Pressure Relief Valve, Pipe Mounting	10-3
R4V / R6V	Pilot Operated Pressure Relief Valves, Subplate Mounting	4-27
R4V / R6V	Pilot Operated Pressure Relief Valves (TÜV), Subplate Mounting	4-37
R4V / R6V*P*	Pilot Operated Proportional Pressure Relief Valves, Subplate Mounting	4-57
R4V / R6V*P*	Pilot Operated Proportional Pressure Relief Valves, OBE, Subplate Mounting	4-63
R4V*P2	Pilot Operated Proportional Pressure Relief Valve, Pipe Mounting	10-15
R5A	2-Port Pressure Compensator	9-53
R5P	3-Port Compensator	9-55
R5R	Pilot Operated Pressure Reducing Valve	9-19
R5R*P2	Pilot Operated Proportional Pressure Reducing Valve	9-31
R5S	Pilot Operated Sequence Valve	9-15
R5U	Pilot Operated Pressure Unloading Valve	9-9
R5V	Pilot Operated Pressure Relief Valve	9-3
R5V*P2	Pilot Operated Proportional Pressure Relief Valve	9-25
RDM	Direct Operated Pressure Relief Valve	7-3

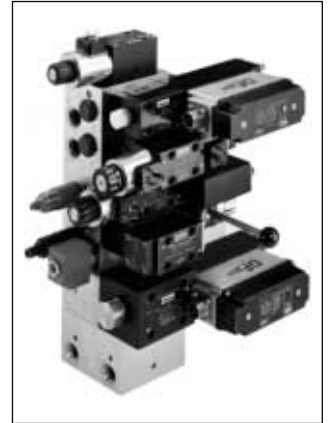
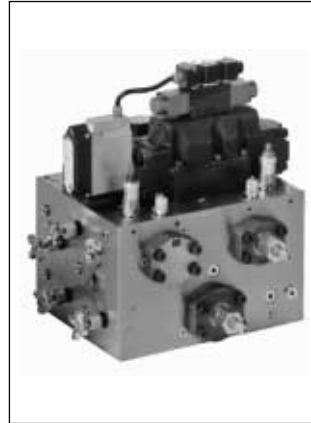
Product Series	Description	Page
RE*E*T	Proportional Pressure Relief Valve, OBE, Slip-In Cartridge	8-43
RE*E*W	Proportional Pressure Relief Valve, Slip-In Cartridge	8-39
RE06M*T	Direct Operated Proportional Pressure Relief Valve, OBE, Subplate Mounting	4-51
RE06M*W	Direct Operated Proportional Pressure Relief Valve, Subplate Mounting	4-47
RH	Hydraulically Pilot Operated Check Valve	10-49
RK, RB	Threaded Check Valves	6-5
RM	Pilot Operated Pressure Relief Valve	7-7
RPDM	Pilot Valve With Proportional Pressure Relief Function	8-21
RS06M	Pilot Valve With Pressure Relief Function	8-20
S06M	Pilot Valve With Pressure Sequence Function	8-24
SCPSD	Electronic Pressure Switch	12-51
SD500	Pressure Intensifier	12-57
SPC	Denison Pressure Compensator	7-41
SPD	Subplate	12-3
SPP	Subplate	12-9
SPV, SPZ	Check Valves	6-13
SPZBE	Check Valve	6-11
SSR	Shuttle Valve	6-3
SVLA	Hydraulically Pilot Operated Check Valve, Subplate Mounting	8-26
SVLB	Hydraulically Pilot Operated Check Valve, Slip-In Cartridge	8-103
TDA	Proportional Throttle Valve	8-73
TDP	Proportional Throttle Valve	8-81
TEA	Proportional Throttle Valve with Shut-Off Valve	8-77
TPQ	Proportional Throttle Valve	8-91
UR*E / US*E	Unloading Valves, Slip-In Cartridge	8-49
UR06M / US06M	Pilot Valve With Unloading Function	8-24
VB	Direct Operated Pressure Relief Valve	4-7
VBY	Pilot Operated Pressure Relief Valve	4-13
VBY*K	Proportional Pressure Relief Valve	4-71
VM	Direct Operated Pressure Reducing Valve	4-89
VMY	Pilot Operated Proportional Reducing Valve	4-99
VS	Direct Operated Pressure Relief Valve	4-3
WM	Pressure Gauge Selector Valve	12-43
ZDR	Denison Pressure Reducing Valve	7-31
ZDV	Denison Pressure Relief Valve	7-13
ZNS	Denison Counterbalance Valve	7-79
ZRD	Denison Throttle Valve with Check	7-55
ZRE	Denison Pilot Operated Check Valve	7-75
ZRV	Denison Direct Operated Check Valve	7-65
ZSRA / ZSRB	Shuttle Valve, Sandwich Plate	8-26
ZUDB	Sandwich Valve With Pressure Relief Function	8-22



Parker is more than a supplier of excellent components. Together with our customers, we develop innovative systems solutions. In this industrial valves catalogue, we would like to point out to you our special competence in industrial control units. Our experienced, highly motivated team answers technical needs with complete, sound solutions.

Our performance spectrum comprises a complex understanding of the job, project management, design, and production, including final tests of control units on our modern, automated test beds. In addition we offer compact hydraulic axis controls.

When you entrust us with your system requirements, you can rely on getting an optimal solution from the Parker valves program with all components used in accordance with their characteristics. Furthermore you can rely on us taking full responsibility for all our valves, electronics and combined functions within the system.



In addition to customized solutions Parker also supplies standardized press controls (e.g. certified versions in nominal sizes NG 06 up to NG50) as shown in our brochure HY11-3235/UK "Hydraulics for Press Controls". Contact your Parker representation for information and offerings concerning your hydraulics.





Under the ordering code AXC Parker offers a range of configured standard closed loop axes for a wide range of applications such as

- Material handling and feed systems
- Wood working and plastics industries
- Machine tools (loading through vertical actuators)
- Paper industry (lifting and tensioning)
- Automotive industry (transport and feeding)

The electro-hydraulic axes consist of proven standard components and are mounted and tested as a unit. Combined with control electronics, the electro-hydraulic axes are ready for use, requiring only connection lines to the system.



With the 3 Parker electro-hydraulic linear drives, position accuracy can be achieved reliably and cost-effectively in all 3 performance classes:

The standard axes catalogue HY11-3341/UK contains all information required to select and order a complete standard axis.

Performance class 1: <math>< \pm 1\text{mm}^\*</math>

Performance class 2: <math>< \pm 0.3\text{mm}^\*</math>

Performance class 3: <math>< \pm 0.05\text{mm}^\*</math>

\*without external load and friction



Technical features

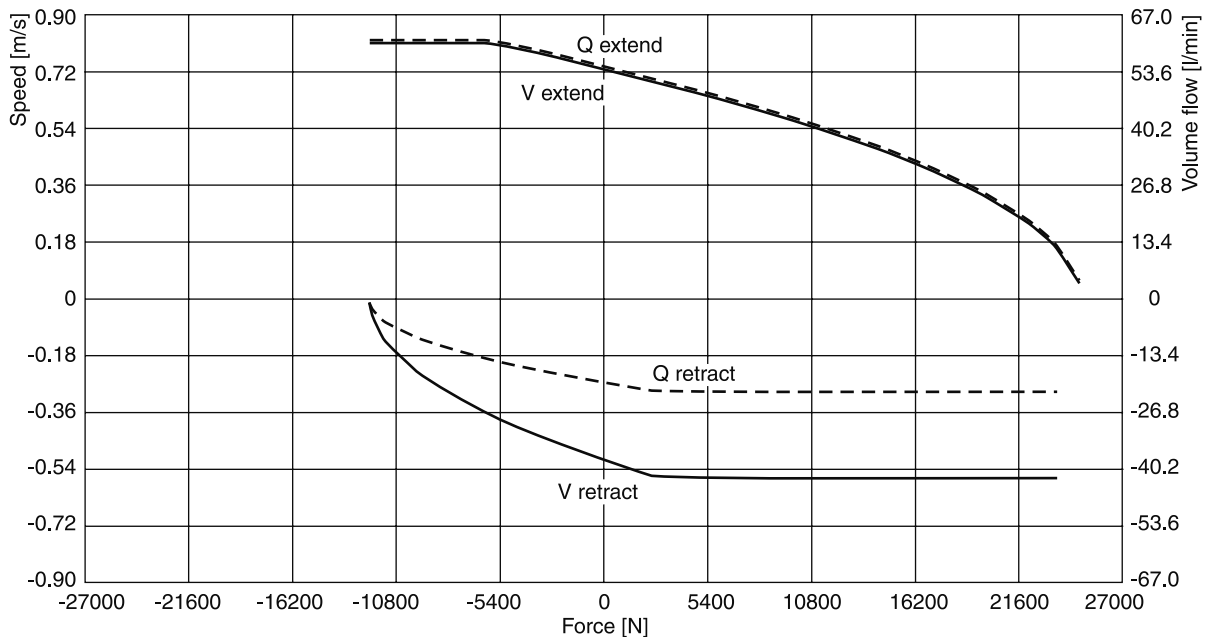
1

- Stroke up to 3000mm
- Push force up to 620kN
- Pull force up to 320kN
- Position and force control
- Speed up to 1m/s
- Overload protection
- Integrated position feedback
- Long life time and low maintenance
- Only P and T need connections
- 8 sizes (40/28 up to 200/140)
- Axis controller (option)
- Blocking valves (option)
- Pressure overload protection (option)
- Standard axis ordering code

Performance diagrams

In addition to the basic technical data the standard axes catalogue provides easy to use information for the right configuration.

With individual diagrams for all cylinder and valve dimensions the axes can easily be selected according to the force and speed requirements.



**Control Valves**

For the 3 performance classes different valve series are used. Starting with standard proportional valves for sim-

ple closed loop solutions to highly sophisticated DFplus valves in performance class 3.



Performance class 1: D\*FB series



Performance class 2: D\*FB OBE series



Performance class 3: D\*FP series

**Controllers**

Optionally the axes can be ordered with controller. In performance class 1 the axes are controlled by Parker

digital modules, in classes 2 and 3 the highly sophisticated Compax 3F controller is used.



Performance class 1: PWDXX digital module



Performance classes 2 and 3: Compax 3F axis controller

**Position Paper of HCD  
regarding  
machinery directive 2006/42/EG  
DIN EN ISO 13849**



Products made by the Hydraulic Controls Division (HCD) of Parker Hannifin GmbH are excluded from the scope of the machinery directive following the „VDMA Position Paper on the Implementation of the Machinery Directive 2006/42/EC in the Fluid Power Industry“ (Rev. 29.07.2009).

The only exceptions are products that comply to the definition of a safety component, defined in article 2 c) of the machinery directive.

All HCD products are designed and manufactured considering the basic as well as the proven safety principles according to EN 13849-2:2008-09, C.2 and C.3, so that the machines in which the products are incorporated meet the essential health- and safety requirements.

Components that fall within the scope of DIN EN ISO 13849-1, *Safety of machinery – Safety related components of controls – part 1: General principles for design* do not necessarily have to be placed on the market as safety components in accordance with the machinery directive.

A component that is placed on the market but not as a safety component does not necessarily provide a lower safety level.

Confirmations for components to be proven components, e. g. for validation of hydraulic systems, can only be provided after an analysis of the specific application, as the fact to be a proven component mainly depends on the specific application.

MTTF<sub>d</sub> values for our products are part of the technical data within our catalogue.

B10<sub>d</sub>, DC and CCF values depend on cycle time, running time and system design. Therefore they can only be provided application specific.

## Position Paper Machinery Directive 2006/42/EG „safety components“

1

Parker Hannifin GmbH confirms, that our safety components comply with the machinery directive 2006/42/EC, as long as they are used as intended. The EC Declaration of conformity includes possible conformity to other directives as well.

Safety components are:

### Pressure relief valves according to directive 97/23/EG

Type R4V\*V , R4V\*W  
Type R6V\*V, R6V\*W  
Type DSDU 578 P20E TÜV  
Type DSDU 1078 E\*E TÜV

#### Intended usage:

Pilot operated pressure relief valves to limit a maximum pressure, pre-adjusted unchangeable to this maximum pressure.

The intended usage is provided as long as the valves are integrated into the system as follows:

- P-port connected directly to the point where the pressure should be limited
- T-port connected directly to tank without any backpressure

Size of the valve and the pipes have to be matched to the maximum possible flow and pressure.

### Clamping valves according to EN 201:1997

#### 2-way-slip in cartridges

Type C10-DEC 101-SC  
Type C13-DEC 107-SC, C18-DEC 107-SC

Direct operated directional control valves NG6

Type D1VW\*-SC, D1DW\*-SC;

Direct operated directional control valves NG10

Type D3W\*-SC, D3DW\*-SC

Pilot operated directional control valves NG10

Type D31DW\*-SC

Pilot operated directional control valves NG16

Type D41VW\*-SC

Pilot operated directional control valves NG25

Type D81VW\*-SC, D91VW\*-SC

#### Intended usage:

For hydraulically operated clamping units of injection molding machines according to the manufacturer's declaration of incorporation.

### Press controls according to DIN EN 693:2009

Press control NG06

Type PADZ2780.3xx

Press control NG10

Type PADZ2781.3xx

Press control NG16

Type PADZ2782.3xx

Press control NG25

Type PADZ2783.3xx

Press control NG50

Type PADZ2784.3xx

#### Intended usage:

To be incorporated into hydraulic presses according to DIN EN 693:2009.

Declaration of conformity is valid from 29.12.2009 for all new above listed products. For earlier delivered products conformity is not possible to declare.

The declaration of product conformity does not include a declaration of conformity for the machinery in which our product is incorporated. The conformity for the machinery only can be declared by the person who places the machinery on the market inside the EU for the first time.

If the listed components are incorporated in already used machinery (placed on the market before 1995) and if they do not change the function of this machinery significantly, the machinery must not be put into operation until the conformity of the machinery to national regulations, especially safety regulations, is declared.

If the function of the machinery is changed significantly, conformity to the machinery directive 2006/42/EC has to be declared.

A declaration of conformity according to machinery directive 2006/42/EC for other Parker products has to be proved depending on the special application.

